

# 2100-958 Series

Analog SmartRescue System Flush Mount Call Boxes



## Reliable emergency communication for analog AOR systems.

- Analog home-run architecture simplifies system design.
- Built-in battery backup maintains communication during power loss.
- Location messaging and line monitoring support faster response.
- Flush-mount design provides a clean, integrated appearance.
- Supports up to 10 phones on a single phone line.
- Compliant with ADA, IBC, NFPA, and UL requirements. ETL listed.



## Specifications

	2100-958NSR	2100-958NSRM	2100-958NMBR	2100-958SSRC2
<b>Enclosure</b>	Stainless Steel	Stainless Steel, Mushroom Button	Antique Bronze	Stainless Steel With Cover
<b>Dimensions</b>	Face Plate: 9.5" x 7.5"			Face Plate: 111.375" x 8.0"
	Back Box: 8.0" x 6.0" x 3.0"			Back Box: 9.875" x 6.5" x 3.0"
				Cover: 9.75" x 6.5" x 1.25"
<b>Mounting</b>	Flush Mount			
<b>Weight</b>	7.0 lbs			
<b>Communication</b>	Analog			
<b>Programming</b>	≤18s Of Recordable Location Messaging			
<b>Max. Wiring Distance</b>	5100ft Per Cable Run			
<b>Power Rating</b>	24 VDC, 0.5A When Powered by RATH® 2500-PWR24U			
<b>Optional Feature</b>	Strobe Interface And Relay			
<b>Environmental</b>	32 - 120°F			
<b>Wiring Requirements</b>	Home Run Communication To Base Station: 24 - 22 AWG 2 Twisted Pair ≤3 Call Boxes Per Wire Run To Power Unit: 18 AWG 1 Pair Communication Failure Relay Output (if applicable): Multi-Conductor Cable			
<b>Power Requirements</b>	24 VDC, Built-In Battery Backup Recharges From 24 VDC Power, 7.2V 300 mAH Battery			
<b>Supervision</b>	Built-In Communication Verification With Failure Relay Output			
<b>Warranty</b>	2 Years			

# AVIRE

N56W24720 N Corporate Cir., Sussex, WI 53089

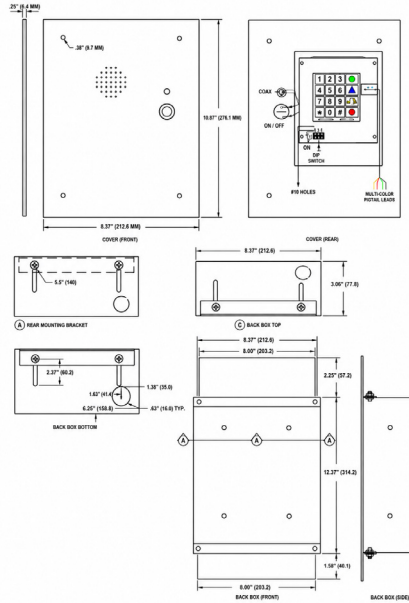
800-451-1460

sales.us@avire-global.com

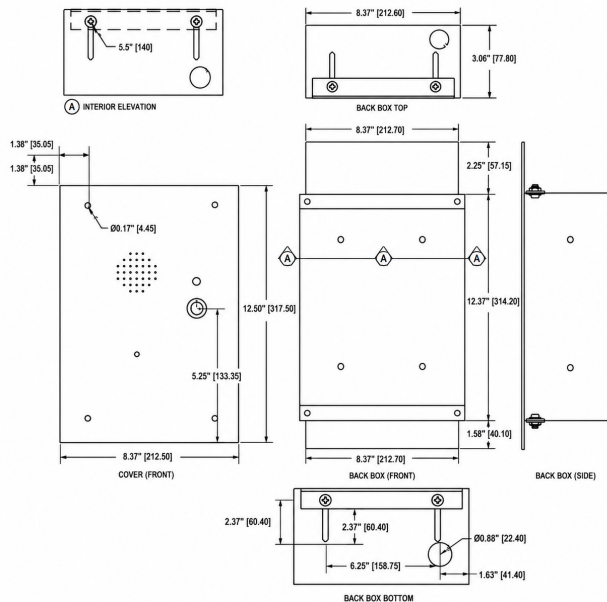
[avire-global.com/en-us](http://avire-global.com/en-us)

## Diagrams

### 2100-958NSR 2100-958NSRM



### 2100-958NMBR



### 2100-958SSRC2

