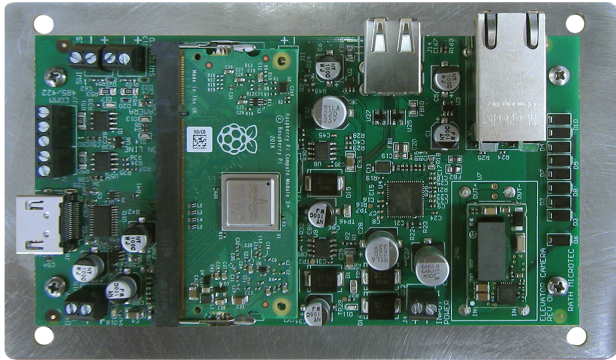


SmartView Two-Way Elevator Visual Communication System



SmartView Controller

Part #'s

- **2100-SVC:** Press Yes or No Button
- **2100-SVC-1:** Press Door Open for Yes, Press Door Closed for No
- **2100-SVCCE (for use with CE Elite Pi):** Press Yes or No Button
- **2100-SVCCE-1 (for use with CE Elite Pi):** Press Door Open for Yes, Press Door Closed for No

Features:

- Compatible with the SmartView Software
- Compatible with the SmartView Display
- Connection for the SmartView Camera
- Dry contacts for Yes/No inputs
- **Data Usage:** 4.4 mb/minute in active state, 0 in idle state (pings every 24 hours)

Current Draw

<u>Active:</u>	<u>Idle:</u>
12v = 1A	12v = 0.5A
24v = 0.5A	24v = 0.25A

CODE COMPLIANCE:

- Certified to CSA Standard B44.1, conforms to ASME Standard 17.5

POWER REQUIREMENTS:

- 12v or 24v through 2100-SVE Extender
- Requires power from the elevator or remotely in the machine or electrical room

WIRING REQUIREMENTS:

- Requires CAT5 or better Ethernet connection or connection to a 2-wire extender

PROGRAMMING FEATURES:

- Board features a uniquely assigned ID address for easy software setup

Installation Requirements:

1. Internet Connection:
 - Routed internet connection using DHCP, OR
 - Cellular modem with data (available from RATH®)
2. Laptop with a network connection for testing

Specifications:

Dimensions: 4" H x 7" W x 1.2" D

Mounting: 32° F to 158° F (0° C to 70° C)

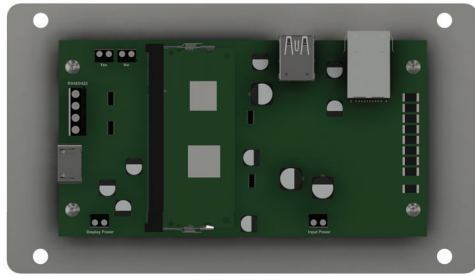
Design: Mounting Plate Included

Warranty: 2 Years

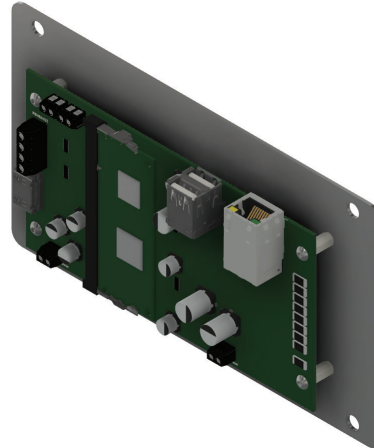
2100-SVC Series

2100-956RR

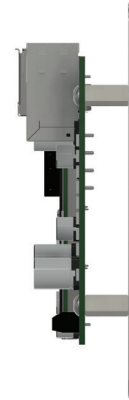
by AVIRE



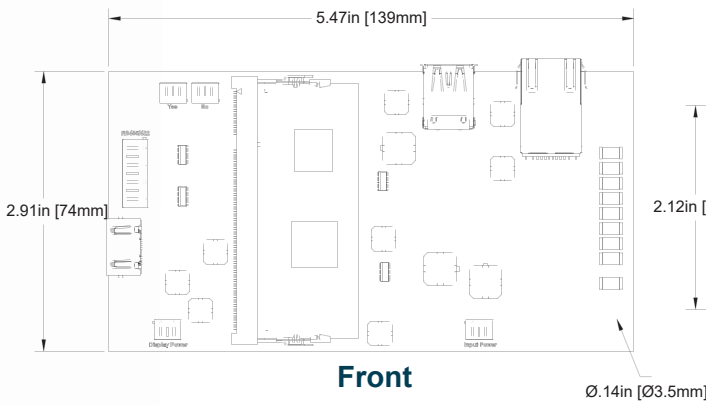
Front View



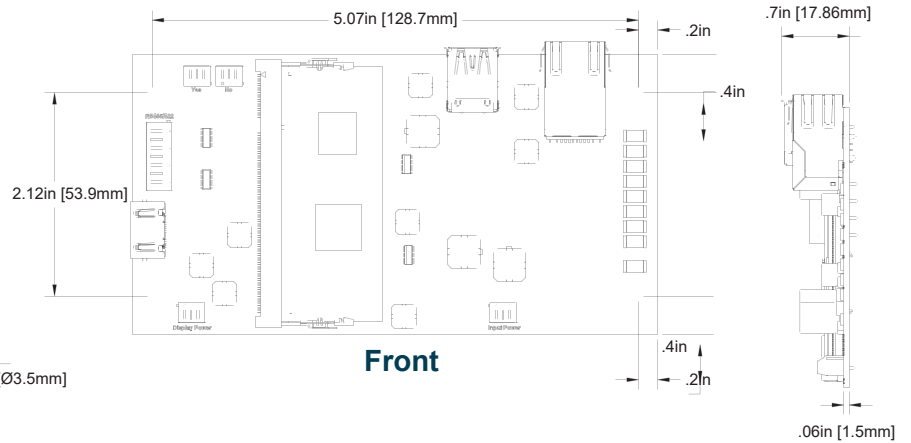
Angled View



Side View



Front

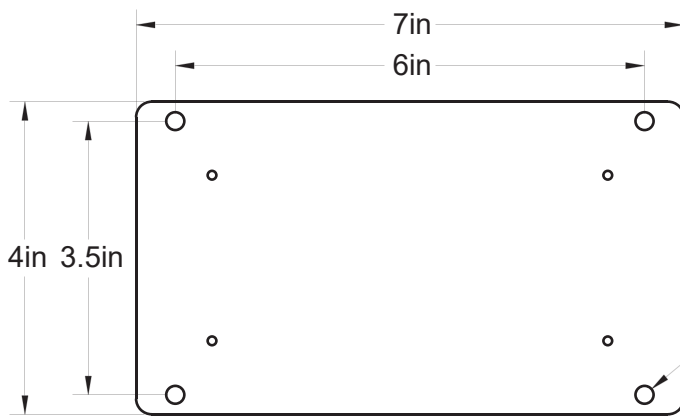


Front

.7in [17.86mm]

.06in [1.5mm]

Side



Front



Side