

SmartView Two-Way Elevator Visual Communication System

2100-SVSCOMP

RATH  **JANUS**
by AVIRE



Part #: 2100-SVSCOMP

KEY FEATURES:

- Compatible with the SmartView Software
- SmartView Controller Board sold separately
- **Data Usage:** 4.4 mb/minute in active state, 0 in idle state (pings every 24 hours)
- **Current Draws**
 - Board:** 12v = 1A, 24v = 0.5A
 - Camera:** 5v = 0.12A (powered by board)
 - Display:** 5v = 0.59A (powered by board)
 - Total:** 12v = 1.46A, 24v = 0.73A

CODE COMPLIANCE:

- Certified to CSA Standard B44.1, conforms to ASME Standard 17.5

POWER REQUIREMENTS:

- Powered by the SmartView Controller

WIRING REQUIREMENTS:

- Includes a 16' cable to connect the Camera to the Smart-View Controller, 20' HDMI cable to connect the Display, and 20' wire to connect the YES/NO Buttons.

Specifications:

Dimensions: 4" H x 7" W x 1.2" D

Mounting: 32° F to 158° F (0° C to 70° C)

Design: Surface Mount

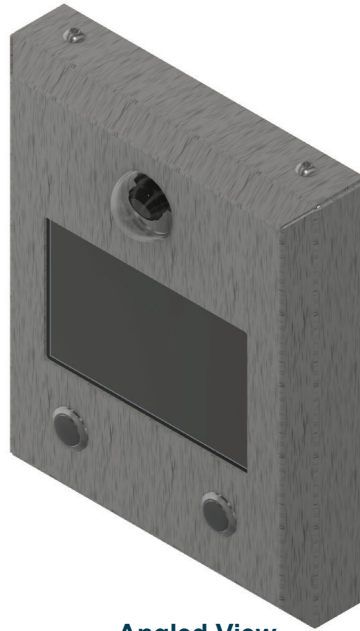
Warranty: 2 Years

SmartView Two-Way Elevator Visual Communication System

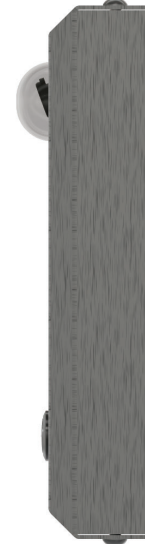
2100-SVSCOMP



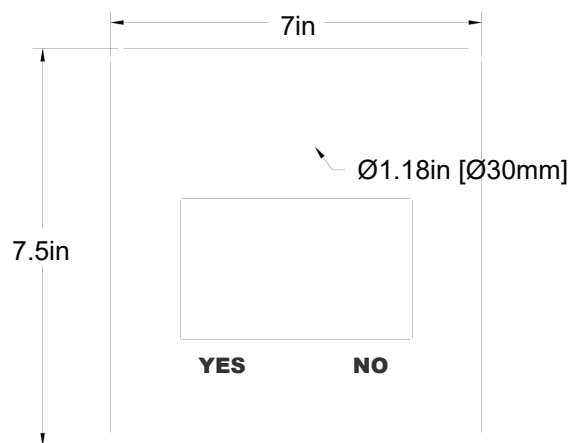
Front View



Angled View



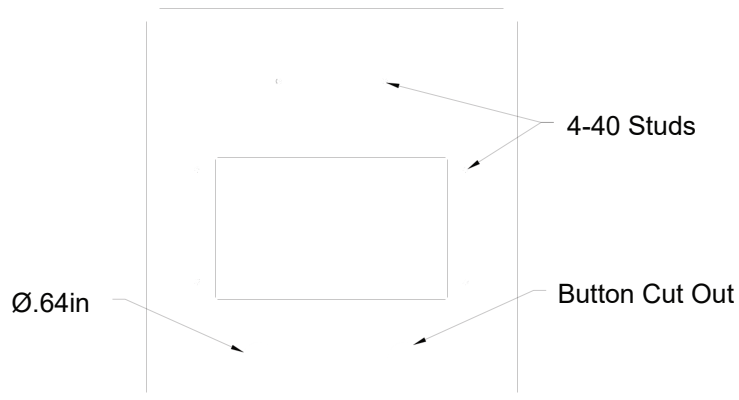
Side View



Front

1.25in

Side



Front