

SmartView Two-Way Elevator Visual Communication System

2100-SVFCOMP

RATH  **JANUS**
by AVIRE



Part #: 2100-SVFCOMP

KEY FEATURES:

- Compatible with the SmartView Software
- The SmartView Controller Board features a uniquely assigned ID address for easy software setup
- All-in-one mounting frame includes SmartView Controller Board, Display, Camera, and Buttons
- Back box included
- **Data Usage:** 4.4 mb/minute in active state, 0 in idle state (pings every 24 hours)
- **Current Draws**
 - Board:** 12v = 1A, 24v = 0.5A
 - Camera:** 5v = 0.12A (powered by board)
 - Display:** 5v = 0.59A (powered by board)
 - Total:** 12v = 1.46A, 24v = 0.73A

CODE COMPLIANCE:

- Certified to CSA Standard B44.1, conforms to ASME Standard 17.5

POWER REQUIREMENTS:

- 12v or 24v through 2100-SVE Extender
- Requires power from the elevator or remotely in the machine or electrical room

WIRING REQUIREMENTS:

- Requires CAT5 or better Ethernet connection or connection to a 2-wire extender

Specifications:

Dimensions: 8" H x 9.25" W x 2" D

Mounting: 32° F to 158° F (0° C to 70° C)

Design: Surface Mount

Warranty: 2 Years

Installation Requirements:

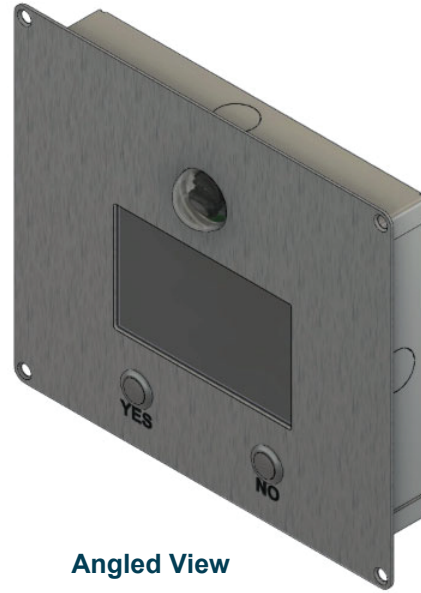
1. Internet Connection:
 - Routed internet connection using DHCP, OR
 - Cellular modem with data (available from RATH®)
2. Laptop with a network connection for testing

SmartView Two-Way Elevator Visual Communication System

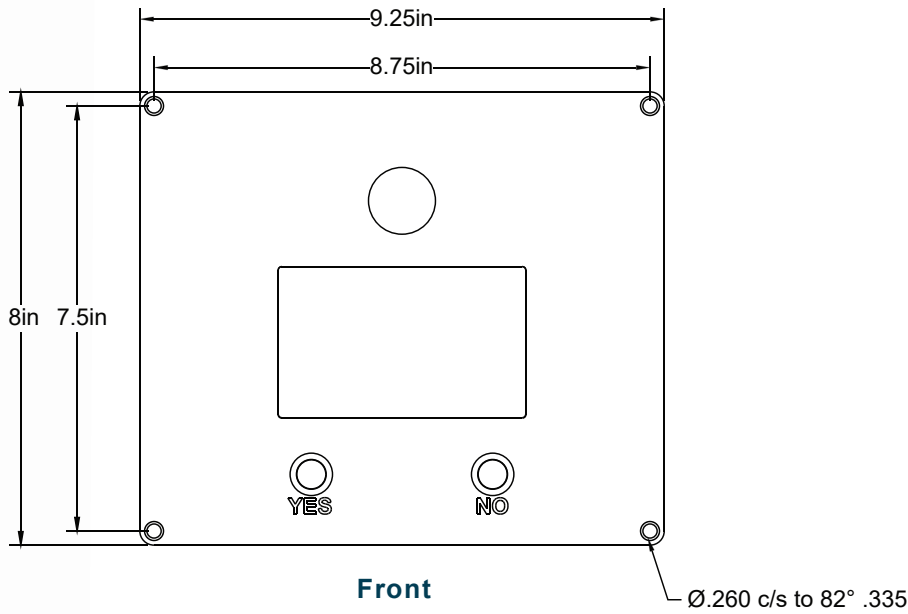
2100-SVFCOMP



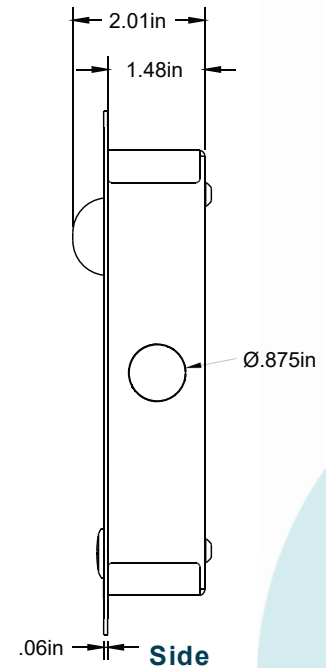
Front View



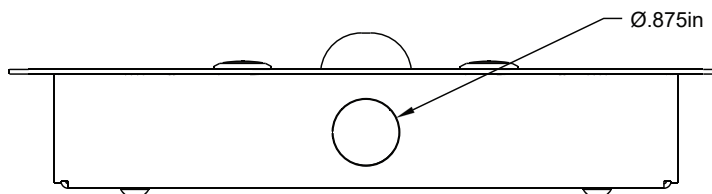
Angled View



Front



Side



Top