



Installation & Operations Manual



Digital Pool Phones

624POOLD, 624MPOOL, 610POOLD, 646POOLD, 690SYPOOLD,
690RDPOOLD, 984LPOOL, 984LPOOLC1, 978POOLD,
998SYPOOLD, 998RDPOOLD, 2100-986DA



Thank you for purchasing a RATH® Digital Pool Phone. We are the largest Emergency Communication Manufacturer in North America and have been in business for over 35 years.

We take great pride in our products, service, and support. Our Emergency Products are of the highest quality. Our experienced customer support teams are available to remotely assist with site preparation, installation, and maintenance. It is our sincere hope that your experience with us has and will continue to surpass your expectations.

Thank you for your business,

The RATH® Team

Table of Contents

Mounting	Page 3-6
Programming	Page 6
Adjusting the Volume	Page 7
Wiring	Page 7
Turning Ringer On/Off	Page 8

Mounting

624POOLD, 624MPOOL, 978POOLD

Items Needed:

- Live digital phone line
- Drill
- Drill bit or knockout set
- Biscuit jack (provided with 624POOLD & 624MPOOL)
- Mounting screws
- Conduit with water tight connector
- 1/8" Allen wrench (provided)
- Screwdriver
- Mounting feet (provided)
- 120vac power (978POOLD only)
- Conduit with (2) water tight connectors (978POOLD only)



Installation:

1. After opening door on unit, use the Allen wrench to remove the 4 screws securing the internal plate.
2. Completely remove the internal plate.
3. Using a drill bit or knockout set, drill a hole in the bottom of the enclosure large enough for the water tight connector.
Note: Be sure the hole sits far enough back so it doesn't interfere with the internal plate when it's reinstalled.
4. Turn enclosure over and screw 1 mounting foot onto each mounting hole on the back of the enclosure using provided screws.
5. Using appropriate mounting screws, screw enclosure to the wall using the other side of the mounting feet.
6. **624POOLD & 624MPOOL:** Run telephone line in conduit, bring line into the enclosure through the water tight connector, and tighten conduit to connector.
7. **624POOLD & 624MPOOL:** Connect incoming line to the biscuit jack, then plug the line cord connected to circuit board to the RJ11 jack on the biscuit jack.
Note: Do not cut RJ11 jack of supplied line cord and splice phone line onto it.
8. **978POOLD:** Run 120vac in the other conduit and water tight connector. Connect 120vac to the supplied transformer in the enclosure using proper wire nuts. Red is hot, black is neutral, and green is ground.
Note: The transformer is wrapped separately in the box.
9. **978POOLD:** Locate the green battery backup pack in the enclosure. Plug the white connector located on the battery pack into the "BATTERY" connector in the bottom left corner of the yellow board.
10. **978POOLD:** Turn on electrical power.
11. Phone is preset to dial 911. If required to call an alternate number not given to RATH® at time of purchase, please follow programming instructions on page 6. If phone is calling 911, screw internal plate back into place. Unit is ready for testing. The 624MPOOL is a manual dial phone and will not have a preset number.
Note: If phone does not have a dial tone when the handset is lifted, please reverse polarity of the incoming phone line.

984LPOOL, 984LPOOLC1

Items Needed:

- Live digital phone line
- 120vac power
- Drill
- Drill bit or knockout set
- Biscuit jack
- Mounting screws
- #10 spanner bit (provided)
- Conduit with (2) water tight connectors
- Wire nuts
- Screwdriver

Installation:

1. Using the supplied spanner bit, remove the 4 screws holding the front cover in place and then remove the cover.
2. Using a drill bit or knockout set, drill a hole in the bottom of the enclosure large enough for the water tight connector.
3. Using appropriate mounting screws, screw enclosure onto the wall.
4. Run telephone line in conduit, bring line into the enclosure through the water tight connector, and tighten conduit to connector.
5. Connect the incoming line to the RJ11 connector and plug into the RJ11 jack on board. Or, obtain a biscuit jack, terminate your incoming line to the biscuit jack, and plug the included phone line into the RJ11 connector on the biscuit jack.
Note: Do not cut RJ11 jack of supplied line cord and splice phone line onto it.
6. Run 120vac in the other conduit and water tight connector. Connect 120vac to the supplied transformer in the enclosure using proper wire nuts. Red is hot, black is neutral, and green is ground.
Note: The transformer is wrapped separately in the box.
7. Locate the green battery backup pack in the enclosure. Plug the white connector located on the battery pack into the "BATTERY" connector in the bottom left corner of the yellow board.
8. Turn on electrical power.
9. Phone is preset to dial 911. If required to call an alternate number not given to RATH® at time of purchase, please follow programming instructions on page 6. If phone is calling 911, screw internal plate back into place. Unit is ready for testing.



690RDPOOLD, 690SYPOOLD (YELLOW)

Items Needed:

- Live digital phone line
- Drill
- Metal capable drill bit or knockout set
- Biscuit jack (provided)
- Mounting screws
- Wall anchors
- Conduit with water tight connector
- 3/32 Allen wrench (provided)
- Screwdriver



Installation:

1. After opening the door on the enclosure, use the provided Allen wrench to remove all 4 screws securing the internal plate.
2. Completely remove the internal plate.
3. Using a drill bit or knockout set, drill a hole in the bottom of the enclosure large enough for the water tight connector.
Note: Be sure the hole sits far enough back so it doesn't interfere with the internal plate when it's reinstalled.
4. Using appropriate mounting screws and anchors, screw enclosure to the wall.
5. Run telephone line in conduit, bring line into the enclosure through the water tight connector, and tighten conduit to connector.
6. Connect incoming line to the biscuit jack, then plug the line cord connected to the circuit board to the RJ11 jack on the biscuit jack.
7. Phone is preset to dial 911. If required to call an alternate number not given to RATH® at time of purchase, please follow programming instructions on page 6. If phone is calling 911, screw internal plate back into place. Unit is ready for testing.

998RDPOOLD, 998SYPOOLD (YELLOW)**Items Needed:**

- Live digital phone line
- 120vac power
- Drill
- Metal capable drill bit or knockout set
- Biscuit jack
- Mounting screws
- Wall anchors
- Conduit with (2) water tight connectors
- 3/32 Allen wrench (provided)
- Screwdriver

**Installation:**

1. After opening the door on the enclosure, use the provided Allen wrench to remove all 4 screws securing the internal plate.
2. Completely remove the internal plate.
3. Using a drill bit or knockout set, drill a hole in the bottom of the enclosure large enough for the water tight connector.
Note: Be sure the hole sits far enough back so it doesn't interfere with the internal plate when it's reinstalled.
4. Using appropriate mounting screws and anchors, screw enclosure to the wall.
5. Run telephone line in conduit, bring line into the enclosure through the water tight connector, and tighten conduit to connector.
6. Connect incoming line to RJ11 connector and plug into RJ11 jack on board. Or, obtain a biscuit jack, terminate incoming line to the biscuit jack, and plug the included phone line into the RJ11 connector on the biscuit jack.
Note: Do not cut RJ11 jack of supplied line cord and splice phone line onto it.
7. Run 120vac into the other conduit and water tight connector. Connect 120vac to the supplied transformer in the enclosure using proper wire nuts. Red is hot, black is neutral, and green is ground.
Note: The transformer is wrapped separately in the box.
8. Locate the green battery backup pack in the enclosure. Plug the white connector located on the battery pack into the "BATTERY" connector in the bottom left corner of the yellow board.
9. Turn on the electrical power.
10. Phone is preset to dial 911. If required to call an alternate number not given to RATH® at time of purchase, please follow programming instructions on page 6. If phone is calling 911, screw internal plate back into place. Unit is ready for testing.

610POOLD, 646POOLD

Items Needed:

- Live digital phone line
- Female RJ11 wall plate
- Screwdriver



Installation:

1. On the back of the unit, plug the line cord into the female RJ11 wall plate.
2. Phone should slide onto wall plate and clip itself into place.
3. Phone is preset to dial 911. If required to call an alternate number not given to RATH® at time of purchase, please follow programming instructions below. If phone is calling 911, unit is ready for testing.

Note: To open unit up for programming, use a small flat head screwdriver to gently lift the plastic covering window on the front of the unit. Lift the logo after plastic is removed. Use a screwdriver to remove the 2 screws. Once screws are loosened, gently lift up and out the red plastic housing on the underside of the phone. The red housing should come off completely exposing the keypad.

Programming

Most Pool Phones are already pre-programmed to call 911. Only perform the following if you want the phone to call somewhere other than 911.

Speaker Phones

Please choose one of the options below that matches the type of line that the phone is installed on:

1. Standard Telephone Line Programming

- a. Press **ENTER** to begin programming
- b. Press **1**, **ENTER**, (phone number you want the phone to dial), **STOP**
- c. Press and hold **STOP** for 3 seconds to exit programming

2. Switchboard Telephone Line Programming (Hotel Industry)

- a. Press **ENTER** to begin programming
- b. Press **1**, **ENTER**, key in access code (usually 8 or 9), **PLAY/PAUSE**, (phone number you want the phone to dial), **STOP**
- c. Press and hold **STOP** for 3 seconds to exit programming

3. Ring-Down Telephone Line Programming

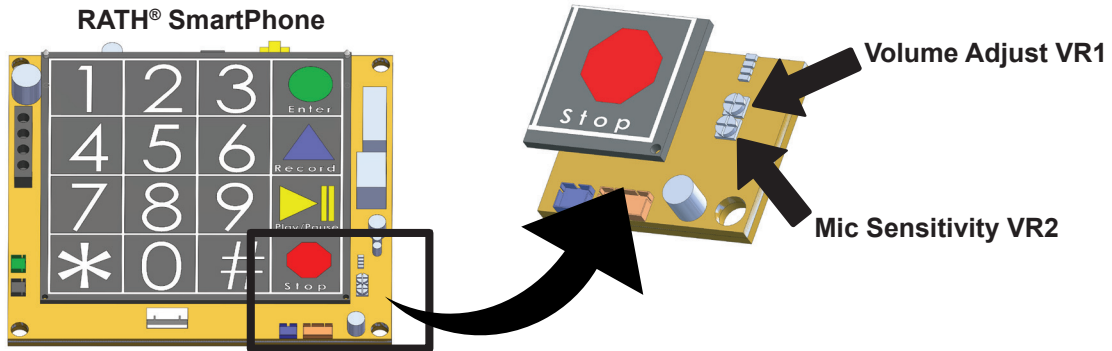
- a. Press **ENTER** to begin programming
- b. Press **1**, **9**, **ENTER**, **2**
- c. Press and hold **STOP** for 3 seconds to exit programming

Handset Phones

Contact RATH® Technical Support at 800-451-1460 ext. 3 if you need to re-program a digital handset phone.

Adjusting the Volume

Speaker Phones



Adjusting the Microphone:

If the person you are calling reports your voice is not loud enough, increase the Microphone Sensitivity by adjusting VR2 a 1/4 turn clockwise (requires a small Phillips screwdriver).

Adjusting the Speaker:

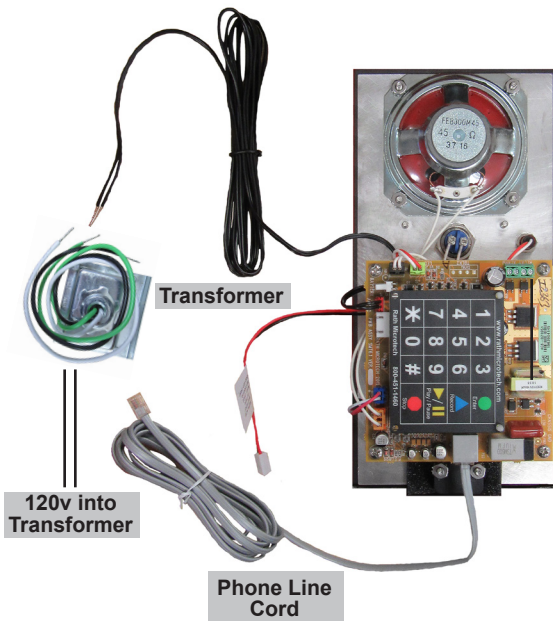
If the voice of the person you call is not loud enough in the phone speaker, increase the volume by adjusting VR1 a 1/4 turn clockwise.

Handset Phones

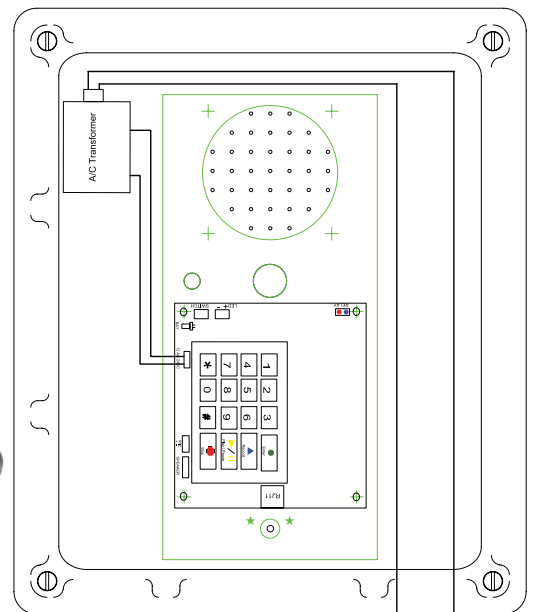
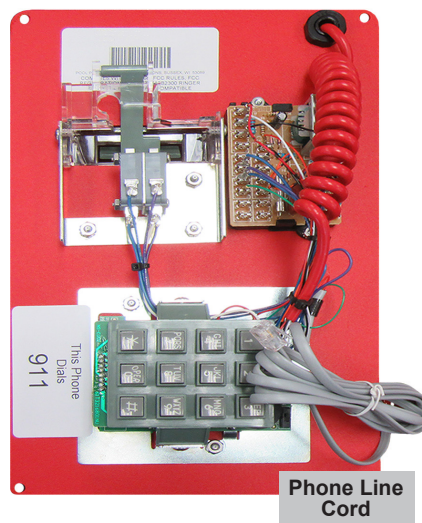
On underside of handset, turn volume wheel to increase or decrease volume.

Wiring

Speaker Phones



Handset Phones

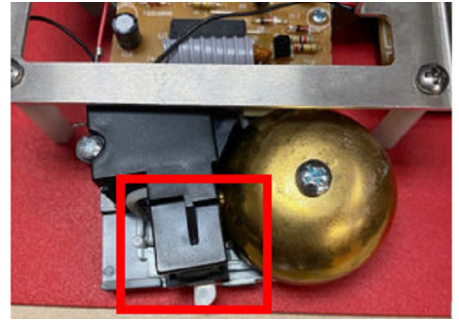


White Wire, Neutral
Black Wire, Hot

Turning Ringer On/Off

624MPOOL

1. Open door on unit and remove 4 screws securing the red internal plate. Lift the plate out and flip it over to expose the keypad.
2. Under the keypad, locate the brass ringer bell.
3. Next to the bell is a plastic slide hammer. Slide the hammer to the left about halfway to enable the ringer. To disable the ringer, slide the hammer all the way to the right
4. Screw internal plate back into place and shut the door on the unit.



624POOLD, 690SYPOOLD, 690RDPOOLD

1. Open door on unit and remove 4 screws securing the red internal plate. Lift the plate out and flip it over to expose the keypad.
2. Above and slightly underneath the keypad will be a small dipswitch labeled "ON" and "OFF". Slide dipswitch to "ON" to enable the ringer or "OFF" to disable the ringer.
3. Screw internal plate back into place and shut the door on the unit.



610POOLD, 646POOLD

1. Open unit up by using a small flat head screwdriver to gently lift the plastic covering on the small white rectangular box on the cover of the unit.
2. Remove the white paper to expose the two cover screws and loosen them with a small Philips screwdriver.
3. Gently lift up and out the red plastic housing on the underside of the phone.
4. Once keypad is exposed underneath the keypad is a small dipswitch labeled "ON" and "OFF". Slide dipswitch to "ON" to enable the ringer or "OFF" to disable the ringer.
5. Put the housing back on the unit and screw into place. Cover screws with paper and plastic removed in step 1.



984LPOOL, 984LPOOLC1, 978POOLD, 998SYPOOLD, 998RDPOOLD

These models do not have ringer option. When unit is called, it will auto-answer and allow for two-way communication instantly.