



## AVIRE Solutions

### Lift emergency phones

Connecting & Protecting People



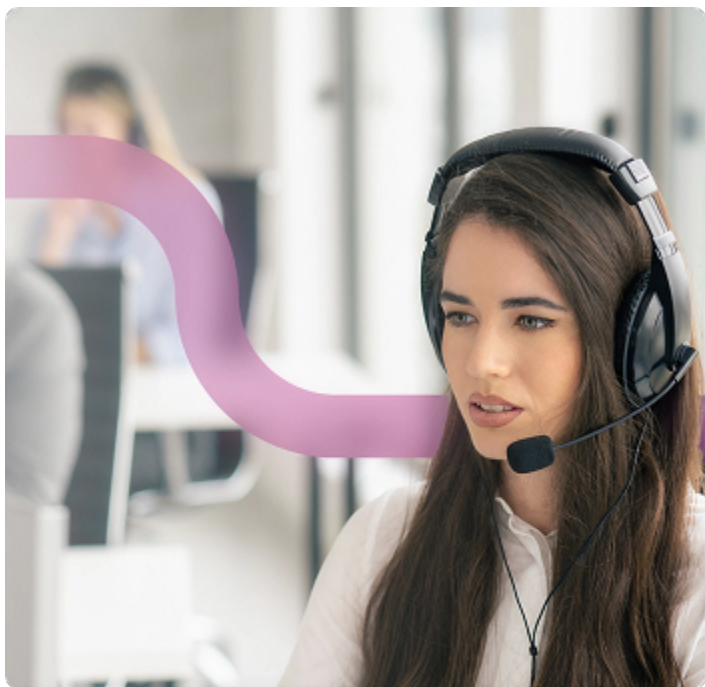
Introduction to AVIRE	1
<b>Lift Emergency Phones</b>	<b>2</b>
DCP EVO Lift Digital Communication Platform	3
Memcom+ Lift Emergency Phone	5
DCP Accessories Top of Car Digital Audio Unit	8
4G VoLTE DCP 2.0 Lift Digital Communication Platform	10
DCP Lift Digital Communication Platform	13
AVIRE M2M Lift SIM Card	16
Memcom+ Accessories Multi Point Station MPS	18
Memcom+ Accessories Wiring Looms	19
Memcom+ Accessories Inductive Loop	20
Memcom+ Accessories Surface Mount COP	21
Memcom+ Accessories Flush Mount COP	22
DCP Accessories CAN Bus Splitter	23
DCP Accessories Universal Power Supply	25
DCP Accessories COP Digital Audio Unit	27
DCP Accessories Wiring Looms	29
DCP Accessories Pit Phone Digital Audio Unit	30
DCP Accessories Surface Mounted Audio Module	32
DCP Accessories Triphony Unit	34
DCP Accessories Inductive Loop	36
DCP Accessories Lift HAWK	38
DCP Accessories Connex-02	40
DCP Accessories Navigation Box	42



## Introduction to AVIRE

**AVIRE is a global manufacturer of lift safety and communication solutions, including detectors, emergency telephones, cellular communication devices, and monitoring systems. Our trusted brands are relied upon by engineers, consultants, and building managers worldwide.**

AVIRE brings together trusted product names — MEMCO, MICROKEY, RATH, and JANUS — each with a strong legacy in life safety, emergency communication, and lift technology. Operating across key global regions, our teams combine local expertise with global insight to support customers throughout the entire product lifecycle — from planning and installation to long-term service and modernization. Our product portfolio includes advanced light curtains, emergency telephones, cellular communication devices, and remote monitoring systems. AVIRE's reliable solutions are trusted by engineers, consultants, and building managers worldwide to keep lift systems safe, connected, and compliant in a wide variety of environments.



## Lift Emergency Phones

Elevator emergency phones with free access to the AVIRE HUB, for easy product configuration and remote monitoring.





VoIP Powered by NEXiiO



## DCP EVO Lift Digital Communication Platform

### Overview

All-in-One Emergency Communication Hub

The DCP Evo combines a GSM gateway, lift emergency phone, and M2M gateway, delivering everything you need in one device. It's the control centre of your modern lift emergency communication system. For installations that need an extra serial port, we also offer the DCP Evo X - same functionality, one added RS232/RS422/485 port.

Built on a legacy of trusted AVIRE gateways and emergency lift phones, the DCP Evo now supports VoIP and VoLTE and includes new features that make it easier to maximise your lift monitoring setup.

### Benefits

- Full-Time Connection to the AVIRE Hub: Ensure continuous connectivity and accessibility. Real-time data available when connected to the Lift Controller or other AVIRE MEMCO products.
- Additional Interfaces for Versatile Installations: RJ-11, CAN Bus, Serial (RS232 or RS422/485), USB, General Purpose I/O. Tailored support for diverse lift installation scenarios.
- Data Encryption for Enhanced Security: Transport Layer Security (TLS) ensures the encryption of all data traffic. Safeguarding the device and your crucial data.
- VoIP powered by NEXiiO: Future-proof your system from the PSTN switch off and the 2G/3G sunset with VoIP (voice over internet protocol) connectivity.
- Need more serial connectivity? The DCP Evo X offers the same functionality as the DCP Evo, with an extra RS232/RS422/485 serial port, which is ideal for sites where a second serial connection to the lift controller or another device is required.

Files and Resources

Install Guides

[4G DCP Evo Install Guide](#)

[DCP EVO X Install Guide](#)



Scan QR for files



## Memcom+ Lift Emergency Phone

### Overview

The Memcom+ lift emergency phone is a high-quality, and reliable autodialler that provides trapped passengers quick and easy access to emergency assistance. The unit has a speaker, microphone, and backlit LCD for programming and status updates.

### Benefits

- Emergency telephones and intercom systems for engineers, fully compliant with regulations
- Connection to the Multi Point Station (MPS)
- Backlit LCD display for programming and status indication
- Easy programming
- Connect up to 8 MEMCOM devices to a single telephone line
- Supports up to 4 emergency call numbers and 2 technical alert numbers
- Connection to the AVIRE HUB enables technical alarm management, test calls, and remote programming of installed units

## Technical Specifications

Parameter	Value
Power Supply	220 - 240 VACw
Consumption	1.8 to 10 VA
Internal Battery	12V, 600 mAh, 9 hr
Connections	CAN, RJ-11, RS-232 or RS-422/485
Networks	2G, 4G
Op. Temp.	-40 to +85 oC
Dimensions	210 x 110 x 65 mm

## Information

Item	Description
492 021	Memcom Multi Point Station (MPS)
451 000	Inductive loop (EN81-70 compliance)
AC-2CM10-100-F-20-000	2G DCP (Digital Communication Platform). Contact our team for all DCP options available.
AC-4CM10-610-F-20-000	4G DCP (Digital Communication Platform). Contact our team for all DCP options available.
MC-SMM00-110-0-00-EU0	Sim Card - Two Year
MC-SMM00-111-0-00-EU0	Sim Card - Three Year
AC-ASM00-100-F-00-000	CAN Bus Splitter

## Files and Resources

<b>Certifications</b>	<a href="#">Declaration of Conformity Memcom+ Emergency Telephone</a>
<b>Datasheets</b>	<a href="#">Memcom and Accessories Information Sheet V05 (GB)</a>
<b>Install Guides</b>	<a href="#">Memcom Installation Guide</a>



Scan QR for files

**Related products**



DCP Lift Digital Communication  
Platform

Bring your lift emergency telephon...



AVIRE HUB Lift Monitoring  
Software

Take control of your entire lift instal...



AVIRE M2M Lift SIM Card





## DCP Accessories Top of Car Digital Audio Unit

### Overview

The MEMCO Top of Car Digital Audio Unit (TOC DAU), is a compact, affordable, and compliant emergency phone solution. It connects to the Digital Communications Platform (DCP), provides a TOC alarm point, an external speaker and microphone inside the lift car, and is ideal for lift groups.

### Benefits

Easy to install Can be programmed and monitored on the AVIRE HUB Minimised maintenance costs Compact design Easily accessible, so cost saving for installation and maintenance Speaker can be heard inside the car Supports external microphone, speakers, and pictograms (sold separately) Buttons on unit for alarm and engineer intercom Integrated battery back-up

## Technical Specifications

Parameter	Value
Colour casing	Yellow
Button	Yes
External pictograms	Yes
Siren support	Yes
External & internal microphone	Yes, only those supplied by AVIRE
Battery	Integrated
Battery & phone fault indicator	Yes
Power supply	8-28V
Connections	CAN & LPBus (RJ45)
Weight	0.5 kg.
Dimensions	77x180x60mm

## Information

AC-DAT18-110-F-0L-000 TOC DAU  
 AC-2CM10-100-F-20-000 Digital Communication Platform - 2G/RS-232  
 AC-4CM10-100-F-20-000 Digital Communication Platform - 4G/RS-232  
 AC-ALB02-100-0-0L-000 LPBus Inductive Loop  
 SIM cards Available in 2, 3, 4 & 5 years' contracts  
 AC-DAP18-100-F-00-000 New 2 button PIT Phone with intercom functionality

## Files and Resources

Datasheets	<a href="#">TOC DAU Datasheet V03 (GB)</a>
Install Guides	<a href="#">TOC DAU Installation Guide</a>



Scan QR for files



## 4G VoLTE DCP 2.0 Lift Digital Communication Platform

### Overview

Ensure passenger safety and compliance with AVIRE's advanced 4G Digital Communication Platform (DCP) 2.0. Designed to meet the latest EN-81-28 standards, this innovative solution secures reliable, real-time lift emergency communication while adapting to the evolving needs of modern buildings and infrastructure changes. Whether you're upgrading from 2G or seeking a dependable 4G VoLTE connection, the 4G DCP 2.0 is the smart choice to future-proof your elevator emergency systems.

### Benefits

- **Battery Back-Up for Power Outages & EN81-28 Compliance:** Provides up to 3 hours of power during outages, exceeding EN81-28 requirements for emergency communication.
- **Monitoring Flexibility:** Offers real-time monitoring and remote adjustments via the AVIRE Hub for seamless operation.
- **Advanced IoT Communication with MQTT:** Enables efficient, real-time data exchange, keeping your system connected and responsive.
- **Backward Compatibility:** Compatible with both analogue (PSTN) and modern digital phone systems, ensuring smooth transitions and regulatory compliance.
- **Cost-Effective Solution:** Remote configuration reduces on-site visits, saving both time and operational costs.

## Features

### Full-time connectivity with the Avire HUB

Benefit	Stay informed with real-time data on the status of your lifts, reducing downtime and maintenance visits.
How it works	By connecting with lift controllers or MEMCO products like the Navigation Box, you'll always have up-to-date insights, streamlining monitoring and enhancing overall safety.

### Advanced security with data encryption

Benefit	Protects critical lift communication data, enhancing security for building operators and residents.
How it works	Secure data transmission prevents unauthorised access, offering peace of mind in high-security environments.

### Supports both 2G & 4G volte

Benefit	Guaranteed continuity as networks switch from analogue PSTN to digital, ensuring reliable emergency communication regardless of the technology transition.
How it works	The 4G DCP 2.0 seamlessly switches between 2G and 4G networks, ensuring uninterrupted communication.

### Easy installation and remote configuration

Benefit	Save time and reduce the need for on-site engineer visits, lowering installation and maintenance costs.
How it works	Quickly find the optimal position within the lift shaft and adjust configurations remotely, enhancing operational efficiency.

## Technical Specifications

Parameter	Value
Power Input	100/240Vac 50/60Hz
Consumption	7W
Internal Battery	12V/800mAh
Operating Temperature	0° – 45° C
IP Rating	IP21
Dimensions	205.1 x 110.1 x 61.28 mm
Data Network	2G; 4G
Voice Calling	2G; 4G (VoLTE)
Interfaces	RJ-11 (PSTN); CAN; RS-232
SIM Slot	Single (2FF Standard)
Security	TLSv1.2, TLSv1.1, TLSv1.0
Messaging Protocol	MQTT

## Information

Item	Description
AC-4CM10-611-F-20-000	DCP 845 RS232 EMEA

## Optional Accessories Ordering Information

Item	Description
AC-ATM00-050-0-00-000	Extension antenna (5m)
AC-ATM00-150-0-00-000	Extension antenna (15m)
453 211ML	MEMCOM Emergency Telephone
AC-PNB10-110-A-0L-000	PSTN Telephone MK852

## Files and Resources

Datasheets	<a href="#">4G DCP 2.0 Data Sheet_v1.0_10102024_GB</a>
Install Guides	<a href="#">DCP Install Guide</a>



Scan QR for files





## DCP Lift Digital Communication Platform

### Overview

Bring your lift emergency telephone system into the digital age with the Avire Digital Communications Platform (DCP).

### Benefits

Combining a GSM gateway, lift emergency telephone and M2M gateway into a single device, the MEMCO DCP is the brain of your modern emergency telephone system, allowing you to:

- Manage outgoing emergency calls via a GSM mobile network connection (*rather than a legacy PSTN connection*)
- Remotely configure and monitor the device via the cloud-based **Avire Hub**
- Connect to multiple Digital Audio Units (lift car, top of car and pit) via the 4-wire CAN Bus system, to provide microphone and speaker functionality
- Remotely configure all connected devices and extract lift monitoring data

## Features

There are three major network changes you should consider when deciding on the most appropriate lift emergency telephone.	<p>The switch from the analogue PSTN to digital planned for 2025</p> <p>The current phasing out of 3G services by all UK mobile network operators</p> <p>The planned 2G switch by all UK mobile network operators</p>
The latest MEMCO DCP supports both 2G and 4G, meaning your lift emergency telephone is future-proofed for the approaching network changes.	GSM Network Flexibility and Reliability: Supports voice (VoLTE) and data over 4G, with fall back to 2G (2G only variant available) – no PSTN landline required.
(*Avire SIM sold separately)	Ease of Installation: Remote configuration/set-up via the Avire Hub, Avire mobile app or SMS

## Technical Specifications

Parameter	Value
Power Supply	220 - 240 VACw
Consumption	1.8 to 10 VA
Internal Battery	12V, 600 mAh, 9 hr
Connections	CAN, RJ-11, RS-232 or RS-422/485
Networks	2G, 4G
Op. Temp.	-40 to +85 oC
Dimensions	210 x 110 x 65 mm

## Information

Item	Description
AC-2CM10-100-F-20-000	2G Digital Communication Platform - GSM/GPRS/RS-232
AC-4CM10-610-F-20-000	4G Digital Communication Platform - GSM/GPRS/RS-232
AC-ATM00-050-0-00-000	5m Extension Antenna
AC-ATM00-150-0-00-000	15m Extension Antenna
AC-DAT18-110-F-0L-000	TOC DAU
SIM cards Available	in 2, 3, 4 & 5 years' contracts
AC-ABV10-100-0-00-000/ABV10-100-0-00-000	Universal Power Supply and Battery Backup
AC-ASM00-100-F-00-000	CAN Bus Splitter

Files and Resources

Certifications	Declaration of Conformity to TRBS 1115-1
Datasheets	DCP Datasheet (GB)
Install Guides	DCP Install Guide  2G 3G Digital Communications Platform Installation Guide V04 UK
Support documents	How to program a guidance location message DCP and DAU Installation Global V02  Call Centre Instructions DCP and DAU Global V02



Scan QR for files

Related products



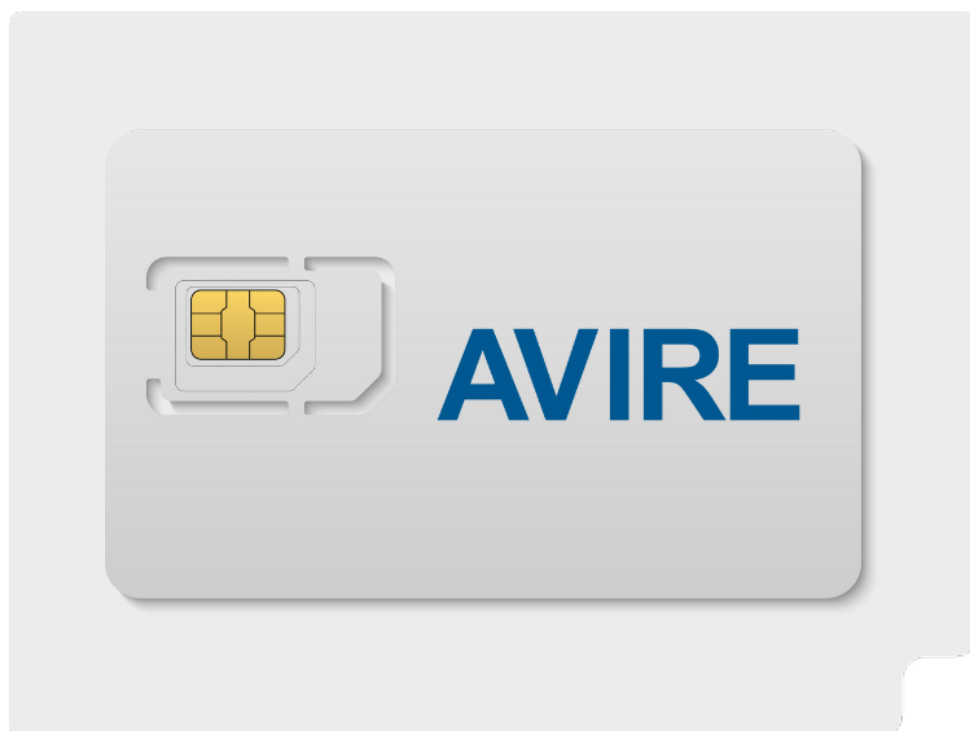
AVIRE HUB Lift Monitoring Software  
Take control of your entire lift instal...



AVIRE M2M Lift SIM Card



AVIRE APP Lift installation software  
The AVIRE App is designed to stre...



## AVIRE M2M Lift SIM Card

### Overview

The AVIRE Machine to Machine (M2M) lift SIM cards provide your lift with a reliable connection at all times. These cards connect automatically to all major network providers ensuring the strongest signal and won't be disconnected due to low usage.

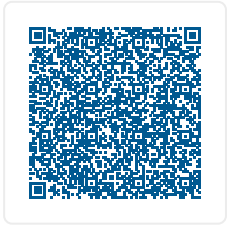
### Benefits

- Tailored for the lift industry: Operates seamlessly in extreme temperatures and endures vibrations.
- M2M Reliability: Say goodbye to unexpected disconnections caused by low usage.
- Non-steered and fully roaming: Automatically identifies and connects to the most robust signal available, ensuring a consistently reliable connection.
- Pre-activated with remote renewals: Minimize hassle and call-out fees with easy, remote renewals for uninterrupted service.
- Calls and Data included with usage monitoring: no more unexpected high bills
- Flexible Plans: Choose between pay upfront/fixed term or subscription plans that suit your needs.
- When paired with our AVIRE DCP: efficient Use (One SIM supports up to 4 lift alarms); Remote Monitoring (Gain access to our advanced remote monitoring platform—the Avire Hub)

Files and Resources

Datasheets

[SIM Card Datasheet V01 \(GB\)](#)



Scan QR for files





## Memcom+ Accessories Multi Point Station MPS

### Overview

For use during installation and commissioning, the lift Multi Point Station (MPS) provides emergency telephone points for the lift engineer in the shaft, pit, or machine room. The easy-to-install MPS has LED status lights and adjustable volume control.

### Benefits

- For use in the pit, machine room, cabin roof, or under the cabin
- 2-wire system for easy installation
- Allows local communication between different MPS points during lift installation
- Hands-free solution
- Supported by Memcom integral battery
- Can be connected to 24V power supply

### Files and Resources

#### Datasheets

[SIM Card Datasheet V01 \(GB\)](#)



Scan QR for files



## Memcom+ Accessories Wiring Looms

### Overview

Connect Memcom products quickly, easily, and error-free with pre-wired looms, each with a wiring harness and clearly labelled connections. The wiring looms are compatible with leading lift manufacturers and are pre-wired into the Memcom terminal block.

### Files and Resources

#### Datasheets

[SIM Card Datasheet V01 \(GB\)](#)



Scan QR for files



## Memcom+ Accessories Inductive Loop

### Overview

Ensure your lift complies with equal access legislation with an inductive loop that enables passengers with hearing aids to hear the response to emergency calls and operator instructions clearly.

### Benefits

- Mandatory for compliance with EN81-70 Lifts for Disabled Use
- Fully compatible with existing emergency telephone installations
- Quick and easy to install
- High-quality sound
- Fits behind Car Operating Panel
- Battery back-up via Memcom unit
- LPBus connection to digital audio units
- Significantly reduces background noises, competing sounds, reverberations, and other acoustic distortions

### Files and Resources

#### Datasheets

[SIM Card Datasheet V01 \(GB\)](#)



Scan QR for files



## Memcom+ Accessories Surface Mount COP

### Overview

A sleek and modern speaker and microphone for emergency calls, this lift surface mount for the Car Operating Panel (COP) is quick and easy to install. With back-lit colour pictograms, emergency lighting, and anti-vandalism security screw.

### Benefits

- Quick and easy install due to surface mount
- Modern, stylish design
- Premium look and feel
- Pre-connected wiring loom with clearly labelled connection to the Memcom unit
- Anti-vandalism security screw
- Available unbranded or customised Back-lit colour pictograms
- Integrated emergency lighting in case of power failure
- Integrated Inductive Loop available in the COP Plate 450 290

### Files and Resources

#### Install Guides

[MEMCOM COP Accessory 450-290 UK](#)

[MEMCOM COP Accessory 450-280 UK](#)

[MEMCOM COP Accessory 450-270 UK](#)



Scan QR for files



## Memcom+ Accessories Flush Mount COP

### Overview

The flush mounted Car operating Panel (COP) is designed to reduce the amount of modification required inside the elevator car, all COP accessories are delivered pre-wired to increase the speed of installation and reduce time spent on site.

### Benefits

Integrated emergency lighting in case of power failure Speaker and microphone Alarm push Back-lit colour pictograms Pre-connected wiring loom with clearly labelled connections to the Memcom unit

### Files and Resources

#### Install Guides

[MEMCOM COP Accessory 450-290 UK](#)

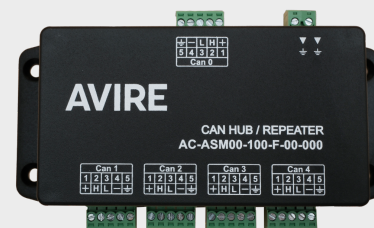
[MEMCOM COP Accessory 450-280 UK](#)

[MEMCOM COP Accessory 450-270 UK](#)



Scan QR for files





## DCP Accessories CAN Bus Splitter

### Overview

The CAN Bus is the 'nervous system' of the lift network, acting as an intermediate between one Digital Communication Platform (DCP) and multiple Digital Audio Units. Connect up to four CAN Bus lines with the MEMCO CAN Bus splitter, to simplify multiple-shaft or single-shaft installation wiring. The CAN Bus Splitter contains five CAN terminating resistors and does not require a power supply.

### Benefits

What is CAN Bus? CAN stands for Controller Area Network and is a vehicle bus standard designed to allow smart devices to communicate with each other through a robust, low-cost, message-based protocol.

## Information

Item	Description
AC-DAB10-111-F-0L-000	CAN COP Digital Audio Unit with LPBus and integrated battery
AC-DAT18-110-F-0L-000	CAN TOC Digital Audio Unit with LPBus and integrated battery
AC-DAP18-100-F-00-000	CAN PIT Digital Audio Unit with integrated battery
AC-AES07-100-0-0L-EN1	Surface Mount COP Accessory
AC-AET08-100-0-0L-000	LPBus Triphony Unit - Two Button
AC-ALB02-100-0-0L-000	LPBus Inductive Loop
AC-ASM00-100-F-00-000	CAN Bus Splitter
AC-ABV10-100-0-00-000	Universal Power Supply

## Files and Resources

Datasheets	<a href="#">Emergency Communication System LPBus Datasheet V05 (GB)</a>
Install Guides	<a href="#">CAN-Bus Splitter Installation Guide V03 ML</a>



Scan QR for files



# DCP Accessories Universal Power Supply

**Overview**

The MEMCO Universal Power Supply is mounted in the motor room and provides both 12VDC power and battery backup to support an extended CAN Bus system for the Digital Communications Platform.

**Benefits**

Mains input (85-230VAC 50/60 Hz) Constant 12VDC 1A Two LEDs to indicate power status

**Features**

- Provides a regulated 24V DC power supply
- Isolates light curtains from lift control circuitry and power systems
- Potential free relay output
- Robust housing
- 3 products within the range
- Detector wiring instructions on the inside of lid for all 280 series PSUs

## Technical Specifications

Parameter	Value
Product Code	280 000 / 281 000 / 283 000
Input voltage	115-240V AC / 24V DC nominal. An input range of 15V - 36V DC / 24V DC nominal. An input range of 18V - 30V DC 24V AC (max) is acceptable
Output voltage	12VDC nominal
Output current	120mA max (for use with MEMCO safety edges only)
Compatibility Safety Edges	Elite Model, E, X and K Series
Compatibility Safety Edges logic Outputs	
Trigger Logic Settings	Two logic output switches (SW2 and SW3 to be set for detector configuration)
Relay output	Single pole change-over with hard silver contacts. Maximum switching current 5 amps at 240V AC
Housing	High impact strength plastic box. 130mm x 100mm x 45mm
Connections	Screw terminal blocks
Audible Tone	Fitted with a beeper and beeper on/off switch
Operating temperature	range -10 to +60oC to EN 60068-2-14:2009
Storage temperature	range -25 to +60oC to EN 60068-2-1:2007 and EN 60068-2-2:2007
Operating humidity	range +55oC @ 93%RH and +25oC @ 95%RH to EN 60068-2-30:2005

## Information

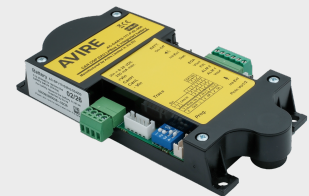
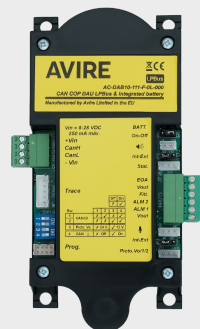
Item	Description
280 000	Power Supply Unit , 115/240V AC Mains input
281 000	Power Supply Unit , 15/36V DC

## Files and Resources

<b>Datasheets</b>	<a href="#">PSU 280 Series Datasheet V04 (GB)</a> <a href="#">PSU 1500 Datasheet V02 (GB)</a>
<b>Install Guides</b>	<a href="#">Universal Power Supply Installation Guide V02 ML</a>



Scan QR for files



## DCP Accessories COP Digital Audio Unit

### Overview

An elevator audio unit that provides high-quality digital audio when installed with the lift emergency Digital Communications Platform (DCP). Mounted behind the Car Operating Panel (COP), the slimline COP DAU also has an integrated battery backup.

### Benefits

- High digital audio quality
- Integrated battery back-up
- Compact mechanical footprint
- Easy installation with 2-wire connection to DCP
- Optional inductive loop for passengers with hearing aids CAN or serial connections
- Minimised maintenance costs

## Technical Specifications

Parameter	Value
Part number	AC-DAB10-111-F-0L-000
Mounting location	Behind COP
Colour casing	Black
Alarm button	Yes
Maintenance button	Yes
External pictograms	Yes
Siren support	Yes
External microphone & speaker	Yes
Internal microphone & speaker	Yes
Battery	Integrated
Battery & phone fault indicator	Yes
Power supply	8-28 VDC
Consumption	43mA - 190mA
Connections	CAN & LPBus (RJ45)
Operating temperature	-10 to +65°C
Dimensions	77 x 180 x 60mm
Induction Loop (IL)	-

## Information

Item	Description
AC-DAB10-111-F-0L-000	CAN COP Digital Audio Unit with LPBus and integrated battery AC-DAT18-110-F-0L-000: CAN TOC Digital Audio Unit with LPBus and integrated battery AC-DAP18-100-F-00-000: CAN PIT Digital Audio Unit with integrated battery AC-AES07-100-0-0L-EN1: Surface Mount COP Accessory AC-AET08-100-0-0L-000: LPBus Triphony Unit - Two Button AC-ALB02-100-0-0L-000: LPBus Inductive Loop AC-ASM00-100-F-00-000: CAN Bus Splitter AC-ABV10-100-0-00-000: Universal Power Supply

## Files and Resources

Datasheets	<a href="#">Emergency Communication System LPBus Datasheet V05 (GB)</a>
Install Guides	<a href="#">LPBus DAU COP V01 ML</a>



Scan QR for files



# DCP Accessories Wiring Looms

**Overview** Part of the MEMCO Emergency Communication System. Loom wire for the Car Operating Panel Digital Audio Unit (COP DAU) as well as the Top of Car Digital Audio Unit (TOC DAU). Compatible with OEM.

## Files and Resources

Datasheets	<a href="#">Emergency Communication System LPBus Datasheet V05 (GB)</a>
Install Guides	<a href="#">LPBus DAU COP V01 ML</a>



Scan QR for files



## DCP Accessories Pit Phone Digital Audio Unit

### Overview

The MEMCO PIT Digital Audio Unit is a pit phone unit that is mounted in the pit of a lift shaft, to provide an emergency communication point when connected to the DCP. It has an emergency battery backup and a yellow casing for visibility.

### Benefits

High digital audio quality Integrated battery back-up Compact mechanical footprint Easily install to Digital Communications Platform with 4-wire connection CAN or serial connections Yellow casing for visibility EN81-28 and EN81-70 compliant



## Technical Specifications

Parameter	Value
Part number	AC-DAP18-100-F-00-000
Mounting location	PIT
Colour casing	Yellow
Alarm button	Yes
Maintenance button	Yes
External pictograms	No
Siren support	No
External microphone & speaker	No
Internal microphone & speaker	Yes
Battery	Integrated
Battery & phone fault indicator	No
Power supply	8-28 VDC
Consumption	43mA - 190mA
Connections	CAN
Operating temperature	-10 to +65°C
Dimensions	28 x 94.65 x 23mm
Induction Loop (IL)	-

## Information

Item	Description
AC-DAB10-111-F-0L-000	CAN COP Digital Audio Unit with LPBus and integrated battery AC-DAT18-110-F-0L-000: CAN TOC Digital Audio Unit with LPBus and integrated battery AC-DAP18-100-F-00-000: CAN PIT Digital Audio Unit with integrated battery AC-AES07-100-0-0L-EN1: Surface Mount COP Accessory AC-AET08-100-0-0L-000: LPBus Triphony Unit - Two Button AC-ALB02-100-0-0L-000: LPBus Inductive Loop AC-ASM00-100-F-00-000: CAN Bus Splitter AC-ABV10-100-0-00-000: Universal Power Supply

## Files and Resources

Datasheets	<a href="#">Emergency Communication System LPBus Datasheet V05 (GB)</a>
Install Guides	<a href="#">Pit Phone Installation Guide ML V02</a>



Scan QR for files



## DCP Accessories Surface Mounted Audio Module

### Overview

The slimline MEMCO Surface Mounted Audio module is mounted on the Car Operating Panel (COP), with easy install connection to the Digital Audio Unit (DAU), providing high-quality digital audio.

### Benefits

- High digital audio quality
- Compact mechanical footprint
- Easy install connection to DAU

## Technical Specifications

Parameter	Value
Part number	MC-AES01-100-0-OL-000
Mounting location	Surface of COP
Colour casing	Stainless steel
Alarm button	Yes
Maintenance button	-
External pictograms	-
Siren support	-
External microphone & speaker	-
Internal microphone & speaker	-
Battery	-
Battery & phone fault indicator	-
Power supply	From LPBus
Consumption	15mA - 320mA
Connections	LPBus
Operating temperature	-10 to +65°C
Dimensions	90mm x 180mm x 15mm
Induction Loop (IL)	Integrated IL

## Information

Item	Description
AC-DAB10-111-F-0L-000	CAN COP Digital Audio Unit with LPBus and integrated battery AC-DAT18-110-F-0L-000: CAN TOC Digital Audio Unit with LPBus and integrated battery AC-DAP18-100-F-00-000: CAN PIT Digital Audio Unit with integrated battery AC-AES07-100-0-0L-EN1: Surface Mount COP Accessory AC-AET08-100-0-0L-000: LPBus Triphony Unit - Two Button AC-ALB02-100-0-0L-000: LPBus Inductive Loop AC-ASM00-100-F-00-000: CAN Bus Splitter AC-ABV10-100-0-00-000: Universal Power Supply

## Files and Resources

Datasheets	<a href="#">Emergency Communication System LPBus Datasheet V05 (GB)</a>
Install Guides	<a href="#">Surface Mount COP LPBus Audio Module ML V01</a>



Scan QR for files



## DCP Accessories Triphony Unit

### Overview

The Triphony Unit is a digital audio module, powered via digital audio units (DAU), that can be used with the Digital Communications Platform (DCP) for internal or external emergency lift communication. It can be installed on the top or bottom of the lift car.

### Benefits

Simple plug-and-play connection to DAU in Car Operating Panel (COP) Use as local intercom or to make external alarm calls Powered via DAU Connects to audio module or lift rescue phone via LPBus connection Daisy chain units if required, e.g., 791 to top of car, and top of car to bottom of car LEDs indicate device and call status

## Information

Item	Description
AC-DAB10-111-F-0L-000	CAN COP Digital Audio Unit with LPBus and integrated battery
AC-DAT18-110-F-0L-000	CAN TOC Digital Audio Unit with LPBus and integrated battery
AC-DAP18-100-F-00-000	CAN PIT Digital Audio Unit with integrated battery
AC-AES07-100-0-0L-EN1	Surface Mount COP Accessory
AC-AET08-100-0-0L-000	LPBus Triphony Unit - Two Button
AC-ALB02-100-0-0L-000	LPBus Inductive Loop
AC-ASM00-100-F-00-000	CAN Bus Splitter
AC-ABV10-100-0-00-000	Universal Power Supply

## Files and Resources

Datasheets	<a href="#">Emergency Communication System LPBus Datasheet V05 (GB)</a>
Install Guides	<a href="#">Triphony 2 button ML</a>



Scan QR for files



# DCP Accessories Inductive Loop

**Overview** The MEMCO Inductive Loop transmits a clear audio signal directly into the hearing aid of hearing-impaired passengers, ensuring compliance with EN81-70. Can be fitted behind COP (even retroactively), with a LPBUS connection to the DAU.

**Benefits** Small form factor inductive loop Inductive loop detector for lift emergency systems LPBus connection to DAU Cat 5 induction loop cable provided Can be retrofitted to an existing installation Installed vertically behind the COP (with screws or adhesive tape) Significantly reduces background noises, competing sounds, reverberations, and other acoustic distortions

**Information**

Item	Description
AC-DAB10-111-F-0L-000	CAN COP Digital Audio Unit with LPBus and integrated battery AC-DAT18-110-F-0L-000: CAN TOC Digital Audio Unit with LPBus and integrated battery AC-DAP18-100-F-00-000: CAN PIT Digital Audio Unit with integrated battery AC-AES07-100-0-0L-EN1: Surface Mount COP Accessory AC-AET08-100-0-0L-000: LPBus Triphony Unit - Two Button AC-ALB02-100-0-0L-000: LPBus Inductive Loop AC-ASM00-100-F-00-000: CAN Bus Splitter AC-ABV10-100-0-00-000: Universal Power Supply

**Files and Resources**

<b>Datasheets</b>	<a href="#">Emergency Communication System LPBus Datasheet V05 (GB)</a>
<b>Install Guides</b>	<a href="#">LPBus Inductive Loop 850 (ML)</a>



Scan QR for files



# DCP Accessories Lift HAWK

**Overview** Remote lift monitoring reduces false and costly engineer callouts. The compact lift sensor monitors lift movements. To identify possible issues, the self-learning system identifies low-activity periods to autonomously perform tests.

**Benefits** Remotely test the lift status without having to connect to the lift controller Self-learning sensor performs autonomous tests at quiet periods Set up tests at scheduled intervals Real-time monitoring via the AVIRE HUB Saves time and cost of site visits for false call-outs 4-wire connection to DCP CAN or serial connections Compact mechanical footprint Quick and easy to install

## Technical Specifications

Parameter	Value
Power Supply	12-24V
Consumption	74mA quiescent, 130mA active
Connections	CAN, Memcom OP, External Sensor, Door Button 1, Door Button 2
Op. Temp.	-10°C to +60°C
Dimensions	138 x 64 x 31 mm



## Information

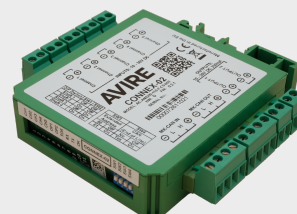
Item	Description
AC-AMT00-100-0-C0-000	Lift HAWK
AC-2CM10-100-F-20-000	Digital Communication Platform - 2G/RS-232
AC-4CM10-610-F-20-000	Digital Communication Platform - 4G/RS-232
453 211ML	Memcom Emergency Telephone

## Files and Resources

Datasheets	<a href="#">Lift HAWK Datasheet V03 (GB)</a>
Install Guides	<a href="#">Lift HAWK Installation Guide V02 UK</a>



Scan QR for files



## DCP Accessories Connex-02

### Overview

The Connex-02 is a remote lift control module that, with the DCP, provides lift monitoring via the AVIRE HUB. User-defined inputs and outputs enable monitoring of service or maintenance status, engineer on-site duration, door cycles, and more.

### Benefits

- Real-time remote lift monitoring and control via the AVIRE HUB
- Monitoring of lift out of service, maintenance mode, and door cycle count Log engineer arrival and departure time
- User-defined inputs and outputs
- Remotely perform lift soft reset
- Opto-isolated inputs and outputs
- DIN Rail Mounted Compact mechanical footprint
- Quick and easy to install Maximum 2 devices per lift, allowing connectivity in lift car and motor room

## Technical Specifications

Parameter	Value
MK-CANBus Powered	Yes
Power Supply	12-24V
Current Consumption	50mA max
Power Consumption	1W max
Connections	5 inputs and 2 outputs
Inputs – Type	Schmitt trigger optocoupler
Inputs – Max Voltage	30V
Inputs – On Threshold	4 – 8V
Inputs – Hysteresis	1V Typical
Outputs - Type	Optocoupled photo relay
Outputs – Max	Voltage 30V
Outputs – Max Current	350mA (No short circuit protection)
Outputs – Voltage drop	1V max
LEDs	Power, CAN activity, input status, output status
Dimensions	102 x 22.5 x 112 (mm)

## Information

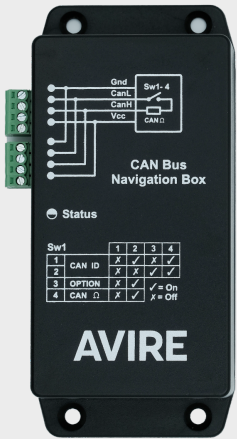
Item	Description
AC-AMD00-110-F-C0-000	Connex-02
AC-2CM10-100-F-20-000	Digital Communication Platform - 2G/RS-232
AC-4CM10-100-F-20-000	Digital Communication Platform - 4G/RS-232
AC-ASM00-100-F-00-000	CANBus Splitter (not required for simple DCP to Connex-02 installations)

## Files and Resources

<b>Datasheets</b>	<a href="#">Connex-02 Datasheet V03 (GB)</a>
<b>Install Guides</b>	<a href="#">Connex-02 Installation Guide V01 UK</a>



Scan QR for files



# DCP Accessories Navigation Box

**Overview** A smart sensor that provides insights into lift journeys. The lift Navigation Box helps building owners and maintenance providers make informed, data-driven decisions on the timing of essential maintenance to reduce malfunction and downtime.

**Benefits** Simple and quick installation (also retrofit) Fitted to the top of the lift car Data on distance travelled, number of trips, and velocity Basic Lift Management System features Data transfer to AVIRE HUB without connection to the lift controller Programme on-site or via AVIRE HUB Suitable for any lift For lifts up to 18 floors

## Technical Specifications

Parameter	Value
Power Supply	10-30VDC
Consumption	0.5W
Connections	MKCAN
Op. Temp.	0°C to +60°C
Dimensions	138 x 64 x 31 mm

Information

Item	Description
AC-NAV02-M0-900	Navigation Box
AC-2CM10-100-F-20-000	Digital Communication Platform - GSM/2G
AC-4CM10-610-F-20-000	Digital Communication Platform - GSM/4G
AC-ATM00-101-0-00-000	10m Antenna
AC-ATM00-050-0-00-000	Extension Antenna for DCP 5 metre
AC-ATM00-150-0-00-000	Extension Antenna for DCP 15 metre

Files and Resources

Datasheets	<a href="#">Navigation Box 02 Datasheet (GB) V03</a>
Install Guides	<a href="#">NAV02 Installation Guide V01 ML</a>



Scan QR for files

## **MEMCO** by **AVIRE**

Unit 2, The Switchback, Gardner Road, Gardner Road, UK, (Sat Nav  
Postcode - SL6 7QE)

T: +44 (0) 1628 540100

E: [ales.uk@avire-global.com](mailto:ales.uk@avire-global.com)

W: <https://www.avire-global.com/en-uk>