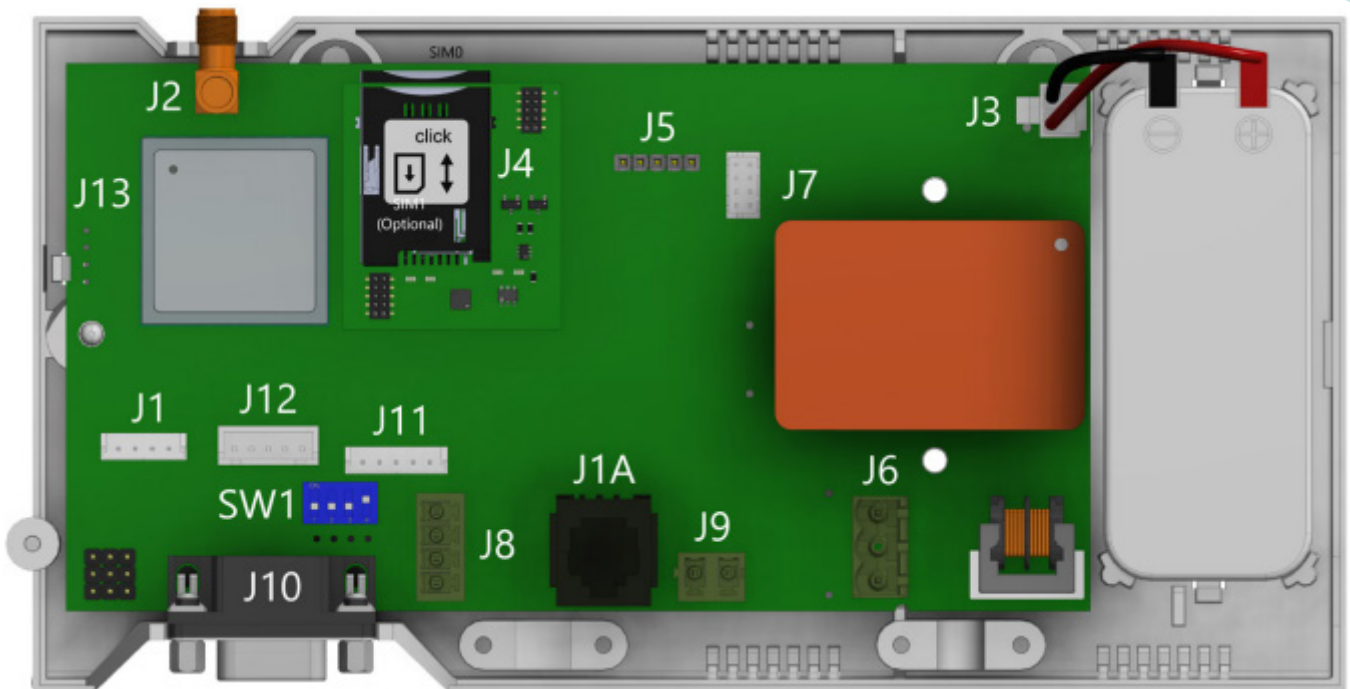


# Record a Location Message



**J1A – RJ11 Socket**

## Items required:

- Telephone Handset with RJ11 Plug on the end of the Cable.
- RJ11 to BT Adaptor.



## How to program a Message:

**You can only record One Voice Message per DCP.**

We recommend a Message with the following Format:

*"Lift Alarm! This Lift Location is..... . Press 'Zero' during the Call to acknowledge the alarm has been answered."*

To do this, use a Handset connected to the DCP RJ11 Socket and follow the Instructions below:

To enter Configuration Mode, press:

- **\*#\*1234\*#\* ->** (You will hear "Enter Option")

To Record, press:

- **\*075# ...Speak...#**

To listen to the Recorded Message Press:

- **\*074\***

(If unhappy with the Message, re-record)

Hang Up Handset.